

# RC-Blue



[www.dental-perfect.com](http://www.dental-perfect.com)




## RECIPROCATING SYSTEM

High efficiency and  
cutting performance  
achiever

Special design in apical  
Favorable helical  
Non cutting tip



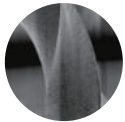
Size	Taper	Material: Blue NiTi 
R25	.08	<b>Length:</b> 21mm,25mm,31mm
R40	.06	<b>Rotary speed:</b> 350rpm
R50	.05	<b>Package:</b> 3 pcs or 6 pcs per box/blister, assorted/single size



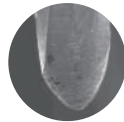
## RECIPROCATING MOVEMENT PATTERN

- Preparation of the root canal with a single file is convenient and quick
- Less working steps, more efficiency and less time-consuming
- Suitable for curved and narrow root canal preparation
- New NiTi material enhances the flexibility and ability of anti-fracture
- Three sizes are available for different types of root canals

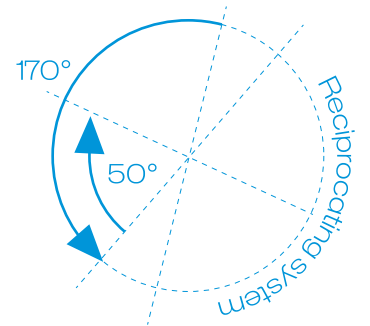
## SPECIAL DESIGN IN APICAL



FAVORABLE HELICAL



NON CUTTING TIP



- © 2 main cutting-edge designs of engines use nickel-titanium equipment.
- © It has a cutting apical triangular cone and cutting edge without cutting effect, which is designed in conical.
- © The unique apical design, which is a non-consider cutting function but supervises and guides the device, reduces the risk of steps and fracture.

## OPERATION GUIDE:

Taking photos of the root canal tip before root canal preparation so that it can display the canal diameters lengths, root canal numbers and the bending of the root canal.

### FOR NARROW OR INVISIBLE CANAL

Opening the pulp, searching the root canal, using the #10 or #15 (stainless steel K file) to the working length.

The R25 RC-Blue File is most suitable in the great majority of cases.



R25 .08

#30 K file can reach the working length passively.

Yes



R50 .05

#20 K file can reach the working length passively.

Yes



R40 .06

No



R25 .08

## RC-BLUE OPERATING CASES:



CE 0197